

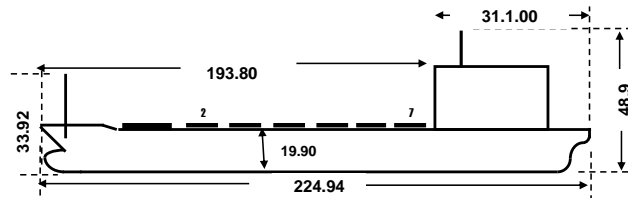
PARTICULARS OF M/V RIPLEY PROSPERITY

CALL SIGN	5LDH4
FLAG	Liberia
PORT OF REGISTRY	Monrovia
OFFICIAL No.	21304
MMSI No.	636021304
IMO / LLOYDS No.	9464417

KEEL LAID		29-Oct-04
LAUNCHED		3-Sep-08
DELIVERED		16-Oct-08
SHIPYARD		IMABARI
JAPAN		MARUGAME

CLASS. SOCIETY	LR
CLASSIFICATION	100A1 Bulk Carrier
P AND I CLUB	Steamship Mutual Underwriting Association Limited

	Metres	Feet
LOA	224.94	737.99
LENGTH (BP)	217.00	711.94
BREADTH (moulded)	32.26	105.84
DEPTH (moulded)	19.90	65.29
HEIGHT (Maximum)	48.65	159.61
BRIDGE FRONT - BOW	193.80	635.83
BRIDGE FRONT - STERN	31.10	108.3



	REGISTERED	SUEZ	PANAMA
GROSS TONNAGE	39,737	41,204.19	39,737.0
NET TONNAGE	25,754	38367.66	25,754.0
SUMMER DISPL	86,824.0	SUMMER DW	76,565.0
LIGHT SHIP	10,259.0		

	FREEBOARD	DRAFT	DW
TROPICAL FRESH	4784 MM	14.759	78,483
FRESH	5078 MM	14.465	76,568
TROPICAL	5110 MM	14.433	78,525
SUMMER	5404 MM	14.139	76,565
WINTER	5.698 MM	13.845	74,614

ERY / PROPELLER / RUDDER	
MAIN ENGINE	MITSUI MAN - B & W 6S60 MC (Mark VI)
OUTPUT	Max. Output 10320 kW x 89.0 rpm Nor. Output 8255 kW x 82.6 rpm
PROPELLER	4 Blades, Solid Type Skewed Propeller , DIAM x PITCH : 7400 mmx5335.9 mm
RUDDER	Marine Rudder
GENERATOR	Brushless Diesel Gen x 3 sets 445 Kw

BOW ANCHORS		
	PORT	STBD
NUMBER	1	1
SHACKLES	10	10
WEIGHT (anchor)	7,875 kg	7,875 kg

LSA		
	LIFE BOAT	LIFERAFTS
NUMBER	2	3
CAPACITY	25	6x1 & 25 x 2set
MASTER NAME	Capt. Sinko O.	
SIGNATURE		

Keel to hatch No.1 cover top 21.4
Keel to hatch No.4 cover top 21.4

Keel to hatch No.7 cover top 21.4
HATCH COVER TYPE - SLIDE SIDE ROLLING

CAPACITY OF HOLDS			
H/COVERS DIMENSIONS	Hold No.	Grain m3	Grain ft3
17.10/11.20 X 12.80 M	1	11,538.66	4,07,488.0
17.10 X 15.60 M	2	13,384.49	4,72,673.0
17.10 X 15.60 M	3	13,296.96	4,69,582.0
17.10 X 15.60 M	4	13,326.76	4,70,635.0
17.10 X 15.60 M	5	13,404.69	4,73,387.0
17.10 X 15.60 M	6	13,391.69	4,72,928.0
17.10 X 15.60 M	7	12,397.10	4,37,804.0
FWA	326 MM	TOTAL	90,740.35
TPC	66.6		32,04,497.0

TANK CAPACITY IN CUBIC METRES		
TANKS	100% M3	(S.G.)
F. O.	3076.65	0.98
D. O.	222.25	0.87
L. O.	111.36	0.92
F.W.	347.24	1.00

BALLAST WATER	
NORMAL	21,021.48
HOLD 4	13,330.9
HEAVY	34,352.37

BALLAST PUMPS	1,100 m3/h x 2 sets
FIRE & GS PUMPS	240/90 m3/h x 2 sets

WINDLASS / MOORING WINCHES / ROPES				
	PoopDeck	Btwn # 6 & 7	Btwn #1&2	F'Castle
WINCHES	3 sets	1 set	1 set	3 set
HYDRAULIC MTR	NIL	NIL	NIL	NIL
HAWSER DRUM	6 sets	2 sets	2 sets	6 sets

MOORING ROPES			
	PCS.	Size	BS
Polypropylene	11	72MM x 220 Mtrs	102 Tons
	5	72MM x 220 Mtrs	101 Tons